

**World Leader in Sophisticated Packaging Systems**

MQ Manual Quad Drive

**series overview**

The BestPack® MQ Series are designed to meet your light to heavy weight carton closure applications.

The MQ Series uniquely uses 4 belt drives, two on the side and two on the top, in order to drive the carton with more precision and stability.

All systems incorporate our exclusive pop out pressure sensitive "High Speed" tape heads with patented tab adjustment, and an extra 4" carton height extension on the upper assembly.

**major features**

- *Designed for Uniform Applications*
- *Four Belts - 2 Top and 2 Side*
- *Adjustable Bed Height from 19.5" to 30.75" for the MQ22 and 21.35" to 30.75" for the MQ44 w/MDH*
- *Width/Height Adjustment on either side of machine*
- *Box Top Compression Unit*
- *Tape Roll Lengths: 1000 yd., 1500 yd., 2000 yd..*
- *Heavy Duty Frame*
- *UL Approved Electrical Parts*
- *Rugged Construction*
- *Capable of Interchanging 2" or 3" Tape Heads*
- *Fully Adjustable*
- *Electrical on/off box can be mounted on either side of machine*

**standard features**

- *Exclusive Pop-out pressure sensitive "high speed" tape head with patented tab adjustment and noise reduction arm*
- *Operation Manual*

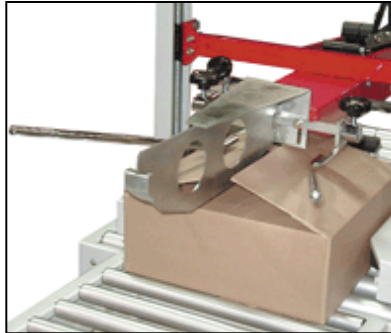
**World Leader in Sophisticated Packaging Systems**

**optional features**

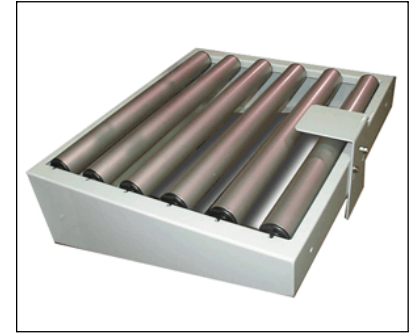
- Spare Parts Kit
- Locking Heavy Duty Caster (4 caster)
- High Speed Motor Upgrade (Up to 125 ft./mm.)
- Motorized Height and/or Width Adjustment
- Interlock Safety Gates
- Stainless Steel



**Locking Castors**



**3 Flap Folder**



**Infeed/Exit Conveyor w/ Stabilizer**

**machine & carton specifications**

- Power Requirements: 110 Volts 60 Hz
- Speed: Up to 40 cartons/minute
- Tape Head: Standard: 2"; Available: 3"

**series comparison table**

Model	Machine Dimensions	Carton Range	Cartons/Min.	Weight (lbs.)
MQ 22-2 or 22-3 2" or 3" tape head	(39.4") x (36.0") x (55.5")	(6.0"-U) x (7.5"-21.6") x (4.5"-20.5")	Up to 40	420
MQ 23-2 or 23-3 2" or 3" tape head	(39.4") x (36.0") x (68.0")	(6.0"-U) x (7.5"-21.6") x (4.5"-30.0")	Up to 40	420
MQ 33-3 3" tape head	(39.4") x (43.0") x (68.0")	(6.0"-U) x (7.5"-30.0") x (6.0"-30.0")	Up to 25	542
MQ 44-3 3" tape head	(39.4") x (57.0") x (78.0")	(6.0"-U) x (7.5"-40.0") x (6.0"-40.0")	Up to 25	542

\* All specifications capable of customization or subject to change without notice